

Short Report



Toy Museum | ©Spielzeugmuseum/Marie-Theres Graf

Toy Museum

Karlstraße 13 -15
90403 Nürnberg

Tel: +49 (0)911 231 - 31 64
Fax: +49 (0)911 231 - 27 10

Welcome!

Nuremberg has been well known for its toys for more than 600 years. Its tradition goes back to medieval doll makers and ranges forward through outstanding makers of pewter figurines and the numerous tin toy makers of the industrial era, all the way to today's International Toy Fair, the world's most important trade show of its kind.

TEST RESULT

for

Spielzeugmuseum

90403 Nürnberg, Certificate-ID: PA-13397-2023



This offer was classified according to the criteria of the nationwide label

»Tourism for All«

and, in the period from

July 2023 – June 2026

is entitled to use the label

»Accessibility checked«

and the associated pictograms

in accordance with the contract.



Toy Museum

©Tatjana Hahn



Toy Museum

©Tatjana Hahn

Overview

At the Toy Museum you can discover many toys from dolls and dollhouses to technical toys, toys from 1945 until now plus special exhibitions. On top, the Toy Museum offers its visitors a playroom, a outdoor playground and a café with beergarden.

Accessibility at a glance

- Parking space for people with disabilities
- Stepless access
- 90 cm minimum width of all passageways / doors,
- Public toilet for people with disabilities
- Handrails on all stairs
- Assistance dogs welcome
- Tactile floor indicators from the entrance to the ticket counter and disabled toilet
- Inductive audio induction loop system
- Information in easy language on website
- Audio guides in different languages
- Wheelchairs available for hire

Information for people with walking difficulties and wheelchair users

All areas relevant for testing meet the quality criteria of the label "**Accessibility certified – partially accessible for people with walking disabilities and wheelchair users**".

Some **information on accessibility** are listed below. For detailed information please see the evaluation report.

- The underground station Lorenzkirche is about 500 metres away and can be reached in about 6 minutes on foot. The path leads over various floor coverings (mainly cobblestones).
- General parking is available in the Hauptmarkt multi-storey car park.
- The entrance/access to the building is step-free (max. 2 cm threshold, if necessary via a ramp).
- Almost all exhibition areas and other areas are accessible without steps or via a lift. The special exhibition area, however, is not accessible without steps.
- The lift cabin is 126 cm x 175 cm. The lift door is 110 cm wide.
- Passages and doors are at least 90 cm wide.
- The exhibits are predominantly visible, perceptible or recognisable while seated.
- The information on the exhibits is predominantly legible while seated.
- The cash desk is 72 cm high at its lowest point.
- In the museum café there are 3 tables that can be lowered (maximum height 80 cm, can be lowered to a height of 67 cm with a depth of 30 cm).
- The following aids are available: Wheelchair, audio guides

Toilet for people with disabilities (ground floor)

- The manoeuvring spaces are:
 - in front of the sink 140 cm x 140 cm;
 - in front of the toilet 140 cm x 140 cm;
 - to the left of the toilet 90 cm x 57 cm;
 - to the right of the toilet 30 cm x 57 cm.
- There are grab rails to the left and right of the toilet.
- The left grab rail can be flipped-up.
- The sink is wheelchair compatible.
- The mirror can be seen while standing or sitting.
- There is a cord as an alarm trigger.

Information for people with hearing impairments and deaf people

All areas relevant for testing meet the quality criteria of the label "**Accessibility certified – partially accessible for people with hearing impairment and deaf people**".

Some **information on accessibility** are listed below. For detailed information please see the evaluation report.

- In case of an alarm (e.g. fire alarm) there is no visually clearly perceptible alarm.
- An outgoing emergency call in the lift is confirmed acoustically, e.g. by an intercom, but not visually.
- In the museum café, there are tables with bright and glare-free lighting where there are no lamps or hanging lamps that interfere with the field of vision or eye contact.
- There is an audio induction loop system at the ticket office/infocounter.
- The following aids are provided: Wheelchair, audio guides

Information for visually impaired and blind people

All areas relevant for testing meet the quality criteria of the label "**Accessibility certified – partially accessible for people with visual impairments and blind people**".

Some **information on accessibility** are listed below. For detailed information please see the evaluation report.

- Assistance dogs (companion dogs, guide dogs for the blind, etc.) may be brought into all relevant areas/rooms of the establishment/offer.
- There are glass doors with no safety markings at a height of 40–70 cm and 120–160 cm.
- The entrance area is recognisable by a tactilely perceptible change of flooring and visually contrasting with the surroundings.
- Stairs have handrails on both sides.
- There are floor indicators in the entrance area up to the ticket office, public toilet and special exhibition area.
- There is no continuous guidance system with floor indicators.
- Almost all areas are well lit, i.e. bright and glare-free.
- There is predominantly visual contrast between the exhibits and the surroundings.
- The exhibits are generally well lit.
- The exhibit signage is visually contrasting.
- An outgoing emergency call in the lift is confirmed acoustically, e.g. by an intercom system.
- The following aids are provided: Wheelchair, audio guides

Information for guests with cognitive impairments

Some **information on accessibility** are listed below. For detailed information please see the evaluation report.

- The name or logo of the business/facility is clearly recognisable from the outside.
- The cash desk is directly visible from the entrance door.
- There is no information in the museum in plain language.
- The following aids are offered: Wheelchair, audio guides
- Information in easy language is available on the website <https://museen.nuernberg.de/besucherinformation/leichte-sprache>

Image Gallery

We have put together some photos from the company / offer for you. You can find more photos in the detailed reports.



Parking

©Tatjana Hahn



Entrance

©Tatjana Hahn



Entrance

©Tatjana Hahn



Entrance

©Tatjana Hahn



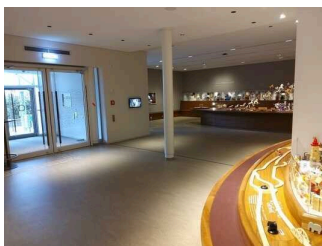
Cash desk / Ticket counter

©Tatjana Hahn



Foyer and Showrooms at ground floor

©Tatjana Hahn



Foyer and Showrooms at ground floor

©Tatjana Hahn



Foyer and Showrooms at ground floor

©Tatjana Hahn



Exhibition area at 1st floor

©Tatjana Hahn



Exhibition area at 1st floor

©Tatjana Hahn



Exhibition area at 1st floor

©Tatjana Hahn



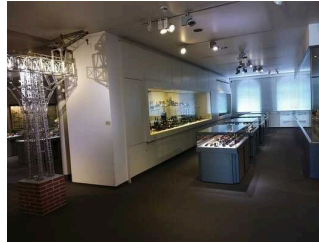
Exhibition area at 1st floor

©Tatjana Hahn



Exhibition area at 1st floor

©Tatjana Hahn



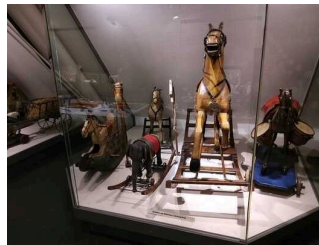
Exhibition area at 2nd floor

©Tatjana Hahn



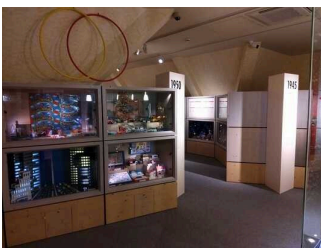
Exhibition area at 2nd floor

©Tatjana Hahn



Exhibition area at 2nd floor

©Tatjana Hahn



Exhibition area and playroom at 3rd floor

©Tatjana Hahn



Exhibition area and playroom at 3rd floor

©Tatjana Hahn



Exhibition area and playroom at 3rd floor

©Tatjana Hahn



Accessible toilet at ground floor

©Tatjana Hahn



Museum Café

©Tatjana Hahn



Museum Café

©Tatjana Hahn



Museum Café

©Tatjana Hahn



Playground

©Tatjana Hahn

Information on the "Tourism for All" labeling system

All establishments and locations certified with the label "Tourism for All" meet the following quality criteria:

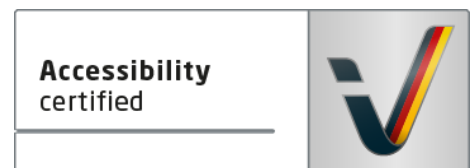
- Data and information on accessibility are collected and checked on site by **external, specially trained evaluators**. The method is not based on self-assessments.
- Data on accessibility is available **in detail** and can be viewed by the guests.
- At least one staff member has successfully passed a **training** on "**Accessibility as a comfort and quality feature**".

The labeling – explanation of the logos and pictograms

The label "**Information about Accessibility**" indicates that detailed and verified information on accessibility is available for all groups of people.



The label "**Accessibility certified**" is based on "Information about Accessibility". It means that the quality criteria defined for specific groups of people are met partially or completely.



The label "**Accessibility certified**" is available in two requirement levels:

"Accessibility certified: partially accessible".

The quality criteria are partially fulfilled for the pictured group of people, i.e. the establishment/location is partially accessible for wheelchair users. The "i" in the pictogram indicates that it is recommended to read again carefully whether the offer meets all (your oder the guest's) individual requirements.



"Accessibility certified: accessible".

The quality criteria are fulfilled for the pictured group of people, i.e. the establishment/location is accessible for wheelchair users.



There are defined quality criteria for **seven groups of people** and a **specific pictogram** for each group.

People with walking disabilities



Wheelchair users



People with hearing impairment



Deaf people



People with visual impairments



Blind people



People with cognitive impairments

